

MULTI VERGE SYSTEM

# NORTHFAST



**BS 5534**  
FOR  
MECHANICAL  
FIXING

**BS 8612**  
FOR  
PERFORMANCE



VERGE UNITS



HALF ROUND  
RIDGE CAP



ANGLED  
RIDGE CAPS



BLANKING PLATE

STARTER UNIT

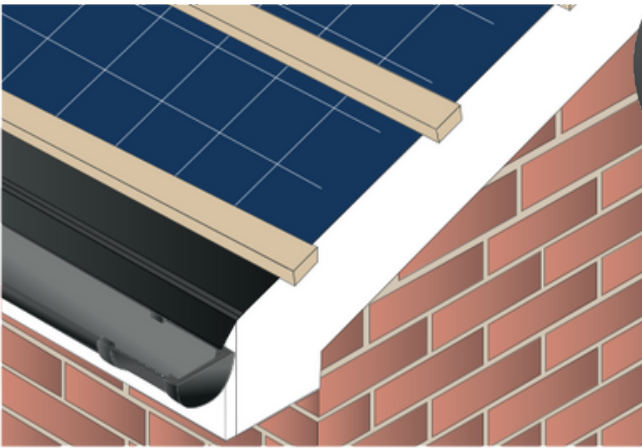


Our high quality, UV stable Ridge Caps incorporate unique and innovative Flap Cap Technology. Flexible flaps contour around the sides of the Verge Unit system effectively creating a 'sealed' unit that prevents water ingress and infestation.

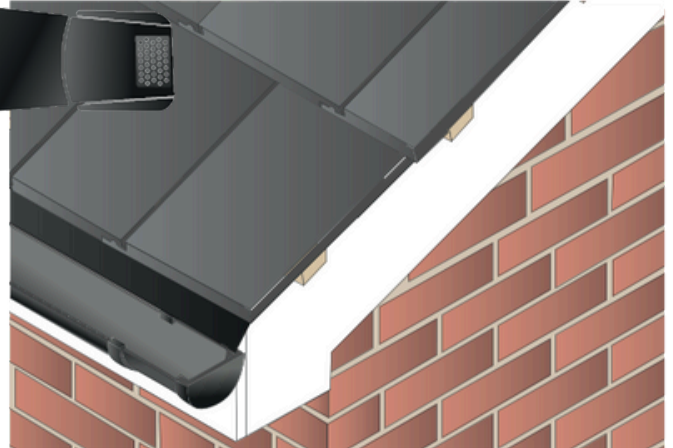


	CONCRETE TILES	SL ATES
VERGE UNITS COMPATIBLE WITH:	✓	✗

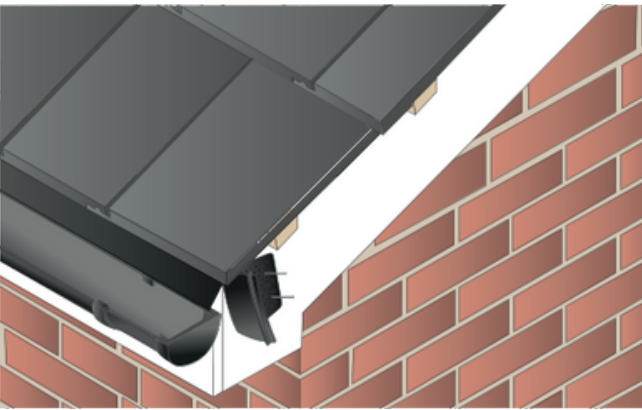
**MULTI VERGE SYSTEM**



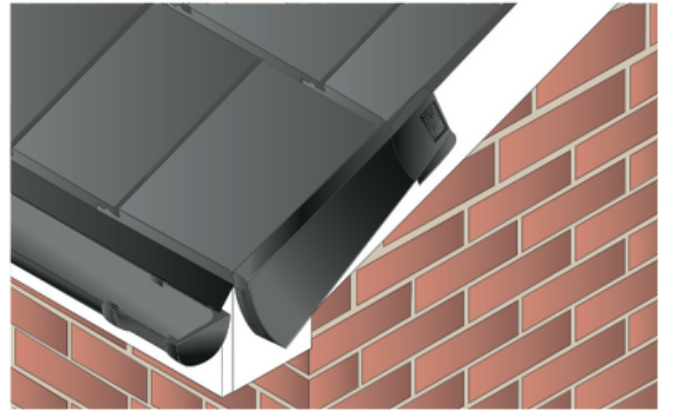
**STEP 1**  
Install the tiling battens with a 30-50mm overhang, over the brick or barge board. Remove existing mortar bedding in refurbishment projects and install new tiling batten to the underside of the existing tiling batten.



**STEP 2**  
Laytiles set flush with the battens. Then slide the batten end clips (not included) onto the overhanging batten ends and nail in place.



**STEP 3**  
Snap the starter piece off the blanking plate. Starting at the bottom edge of the roof, insert the starter piece into the front end of the verge unit, and mark out the starter piece position on the fascia and barge board. Remove the unit, then mechanically fix the starter piece into position through the grid.



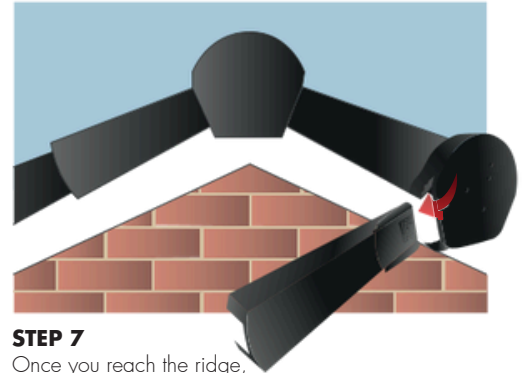
**STEP 4**  
Slide the first verge unit over the tile at the eaves, and into the starter kit, fitting it under the head laps to ensure the unit is firmly held in place. Screw fix the unit through the top grid into the batten end clip and into the batten.



**STEP 5**  
Slide the next verge unit into the upper edge of the first unit, press firmly to the tile, fitting it under the head laps to ensure the unit is firmly held in place and then nail the unit through the top grid into the batten.



**STEP 6**  
Continue the process up along the barge board until you reach the ridge. If required, insert the blanking plate over the final verge nail grid to prevent water ingress and to finish off aesthetically.



**STEP 7**  
Once you reach the ridge, insert a Ridge Cap, ensuring that the flexible flaps on the Ridge Cap contour around the outside of the Verge Unit. Screw the Ridge Cap to the ridge batten.



For further technical advice please contact:

Roadstone Ltd  
Retail Shop  
Belgard Road  
Dublin 24  
Tel: 01 4041275

Northstone Ltd  
Retail Shop  
Creagh Road  
Toomebridge  
Tel: 0044 28 7965 1317

Roadstone Ltd  
Retail Shop  
Classis Ballincollig  
Co Cork  
Tel: 021 4800118

