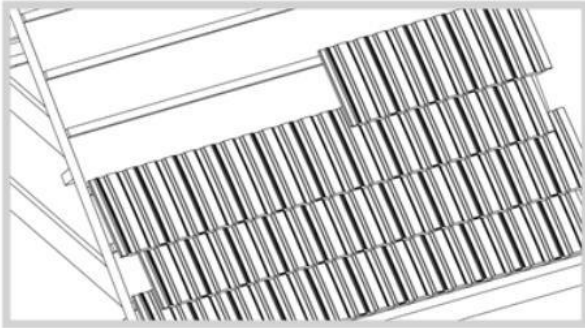
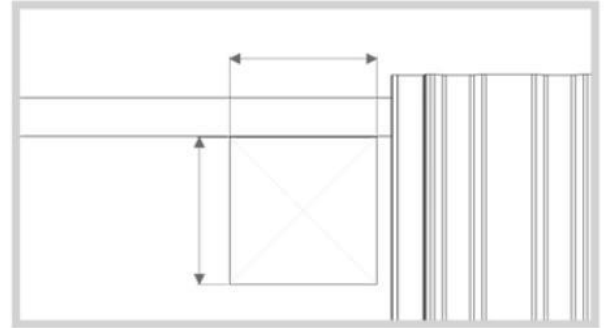


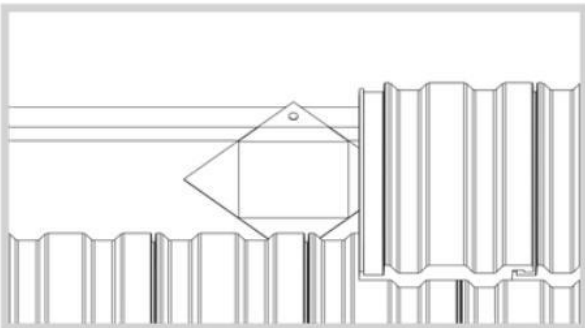
# Donard / Derrie Installation Instruction



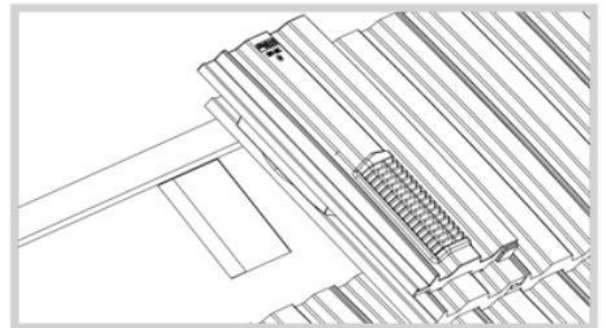
1. Install the roof tiles up to the point where the vent needs to be placed.



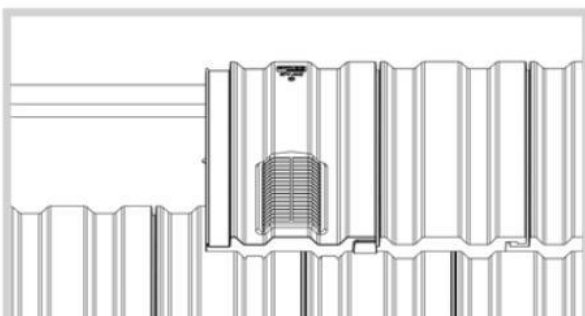
2. Draw a 150mm by 150mm rectangle on the underlay directly beneath the batten. Then, mark a cross through the center of the rectangle to serve as a guide for cutting the underlay.



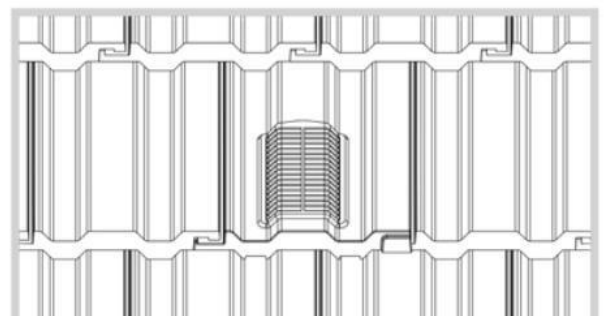
3. Cut along the lines of the diagonal cross, then fold back the triangular sections of the underlay to reveal the rectangular opening. Fold the top edge over the batten. Make sure the right side of the vent locks onto the flap tightly against the batten and fix it in place using a nail or staple, neighboring tile, with the plastic base tab securely tucked underneath that tile. Confirm that the vent's base spigot passes through completely without catching on the underlay edges.



4. Place the tile vent into the cut opening in the underlay, hooking its top sections onto the batten, hooking its top sections onto the flap tightly against the batten and fix it in place using a nail or staple, neighboring tile, with the plastic base tab securely tucked underneath that tile. Confirm that the vent's base spigot passes through completely without catching on the underlay edges.



5. Secure the tile vent to the batten using roof tile nails through the two raised hole sections. The nails will puncture the plastic as they are vent. Then proceed with installing the remaining roof tiles as usual, driven in, creating the necessary openings.



6. Attach any tile clips recommended by the manufacturer to the tile driven in, creating the necessary openings.

**For further technical advice please ask for our data sheet  
and assembly document, or contact:**



Roadstone Ltd  
Retail Shop  
Belgard Road  
Dublin 24  
Tel: 01 4041275

Northstone Ltd  
Retail Shop  
Creagh Road  
Toomebridge  
Tel: 0044 28 7965 1317

Roadstone Ltd  
Retail Shop  
Classis Ballincollig  
Co Cork  
Tel: 021 4800118



