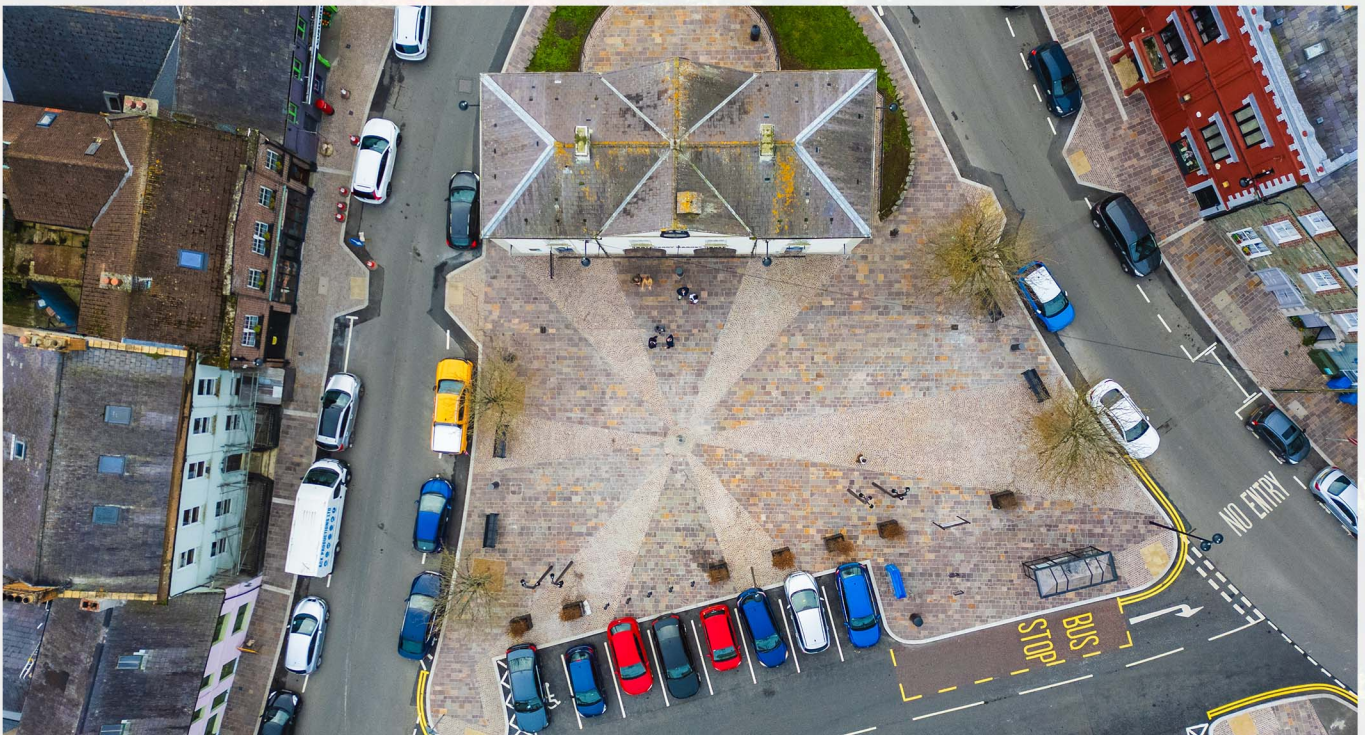




NORTHSTONE
A CRH COMPANY

PORTAFERRY PUBLIC REALM SCHEME



CLIENT

Ards and North Down Borough Council

PROJECT LOCATION

Portaferry

PRINCIPAL CONTRACTOR

Northstone Materials Limited





CASE STUDY

PORTAFERRY PUBLIC REALM SCHEME

PROJECT OVERVIEW AND CHALLENGES

The Portaferry Public Realm project aimed to improve the town centre and the pedestrian pathways leading to Market Square. The goal was to create a revitalised space that would serve as a new hub for community engagement and provide an improved civic area for future use by residents and local tourism.

The upgraded pathways connect the Strangford Lough ferry, Exploris Aquarium, and the historic Portico building to the town centre. This connection is a crucial aspect of the project and is expected to help maintain and boost commerce in this popular tourist destination.

WORKS ON THE SCHEME INCLUDED

Approximately 1,300 meters of pedestrian footway upgrades were conducted, including replacing existing kerbs with new imported granite and relaying existing granite from other areas within the project.

The footways were constructed with different materials depending on the location. About 1,200 square meters of footway received a 10mm bituminous macadam (bitmac) or hot rolled asphalt (HRA) surface, accented with a double row of cobble sets. Approximately 730 square meters of footways were also paved with new Porphyry paving slabs.

The new civic space in Market Square, which replaced a worn-out parking area, features around 970 square meters of new paving using the same Porphyry paving slabs and Porphyry cobble sets. This design creates the illusion of a shining sun emerging from a central spot within the new square.

The entire project benefited from a new street lighting design that included smart lighting heads capable of relaying usage data and faults back to the end user in real time. Additionally, new feature light columns were installed in the square to enhance any events that may take place.

We also upgraded the street furniture, including refurbished existing benches and new benches, bins, cycle stands, handrails, and wayfinding signs to guide visitors to local attractions.

OUR CHALLENGES

Our primary challenge with the scheme was coordinating and planning operations to minimise disruption to local traders and residents as much as possible during this extensive project.

OUR SOLUTION

We made every effort to keep our work area as small as possible and to open up sections quickly to minimise disruption.

Working in a vibrant town centre while maintaining the flow of pedestrian and vehicle traffic posed the most significant challenge for Northstone. However, the positive feedback received during and after the project was a testament to our successful planning and execution.

Additionally, we collaborated closely with local event organisers to ensure that we had available spaces for market days and the renowned Gala Festival during construction, accommodating these events to minimise disruption.

To see more of our projects visit www.northstonematerials.com/case-studies